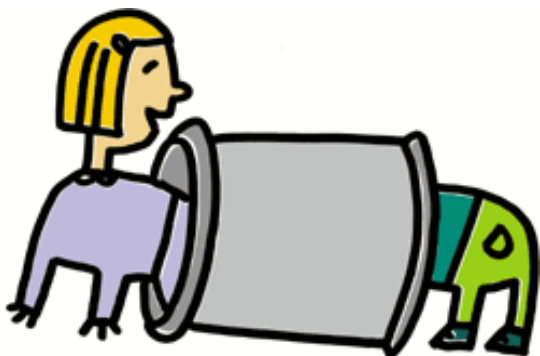


Enable Ireland Mission Statement

The mission of Enable Ireland is to *enable those who use our services to achieve maximum independence, choice and inclusion in their communities.*

We do this by offering a range of services and supports of the highest quality, in line with the needs and wishes of service users, and in active partnership with them.



How to find us

Enable Ireland Cavan Early Services is located at Hillside, Rathcorrick, Cavan. H12 NT26.



Contacting Us/Further Information

You can contact us between 9.00 a.m. and 5.00 p.m. Monday to Friday at

Enable Ireland Cavan
Hillside
Rathcorrick
Cavan H12 NT26

Phone: 049-4326990

Fax: 049-4326991

Email: admin.cavan@enableireland.ie

Web: www.enableireland.ie



**enable
ireland**

Empower · Include · Enable
Action on Disability

Early Services Cavan

**Enable Ireland provide services
in collaboration with the HSE
Dublin North East**

September 2015

Enable Ireland provides early services in Cavan in partnership with the HSE Dublin North East.

- Services are provided to:

- Children aged from 0-6 years, who live in Cavan Community Services area.

- And who have a physical, sensory, learning disability and/or developmental delay, and/or a diagnosis of autistic spectrum disorder or who present with several features of autistic spectrum disorder.

- Who require ongoing team based interventions.

- The Enable Ireland Team currently provide services throughout Cavan Community Services area.



THE TEAM : Who We Are

The team includes a :

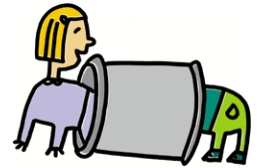
- Clinical Psychologist
- Occupational Therapist
- Physiotherapist
- Social Worker
- Speech and Language Therapist
- Child and Family Support Worker
- Administration

The team is managed by the Early Services Manager.

The Enable Ireland Team work very closely with colleagues from the HSE Dublin North East, including Public Health Nurses, Paediatricians, Senior Medical Officers and General Practitioners.

What Service is Provided.

The **Enable Ireland Early Services Team in Cavan** provide a range of therapy and support services. We aim to enable children and their families to take part in their local communities to a level of their choice. Some of our sessions are home based, while others will be centre, preschool or school based. Individual and group sessions are provided. Different members of the team may be involved depending on a child's individual needs.



How I Refer.

Referral for children 0-6 years can be made to Early Services using the Children's Disability Services Referral Form. Alternatively for children under 5 years of age referral can be made through the Assessment of Need Officer. The referral forms are available from Enable Ireland .

What Happens After Referral.

If your child meets the referral criteria for the Enable Ireland Early Services Team, a member of the team will meet with you and your child to find out about his / her strengths and needs.

The Team will then meet with you, to jointly develop a plan for your child and to set goals for the future.

Further Information

For further information please contact the Early Services Manager or any member of the Early Services Team– at the address overleaf.