

Enable Ireland

National Newsletter 2011 / 2012

INSIDE THIS ISSUE

Spotlight

SeatTech

It's never too late to sleep straight! Night positioning news from the SeatTech team

Page 4

In My Own Words

"Jamié is a very bright little boy with lots of character. His personality shines through him. I am very proud to call myself his mum"

Page 7



New Playgrounds

Play is the work of children in Kilkenny and Meath

Page 8



Padhraic Dormer

Access Campaign

One service user on his personal campaign

Page 8

Cork Shop

Minister Kathleen Lynch officially opens Enable Ireland's newest retail outlet on Oliver Plunkett Street in Cork

Page 10

No Limits

Find out about the No Limits Kite Appeal and how you can support Enable Ireland's national fundraising and awareness campaign

Page 10



New Kildare Centre

Billy Carroll with Minister Kathleen Lynch pictured at the opening of the Enable Ireland Kildare & West Wicklow Services Centre

The new purpose-built centre at Jigginstown, Naas, has quickly become home to the staff, service users and families that use the centre. On entering, visitors are greeted with a wonderful planetary mural painted by the 2010 Transition Year Students at Piper Hill College. The bright, colourful entrance sets the tone for the building and makes it instantly welcoming. The planetary theme is continued throughout.

The centre was developed in partnership with the HSE and Naas Urban District Council. The new centre would not have been possible without the support of the community and the very active Parent's Group in Kildare.

The staff began providing services in the new building in September 2009. The greatly improved facilities include additional therapy rooms, hydrotherapy pool, gross motor and sensory integration

rooms, AT room and a purpose built independent living kitchen. These facilities have been of benefit not only to Enable Ireland service users but to other services with in the area. We now have greater opportunities to run groups, and children of all ages are benefiting from the social interaction and support from peers. This has been seen in the development of friendships and interactions amongst many of the children, all of which contributes to the relaxed and friendly feeling in the building.

On moving to the new centre, staff had the space to restructure the services and deliver more team based activities. Teams are structured into Early Years and School Age teams.

The centre was opened by Minister Kathleen Lynch TD Minister for Disability, Equality, Mental Health & Older People in May 2011.

Enable Ireland Awarded EU Grant

Enable Ireland has successfully been awarded a three year grant under the Lifelong Learning Programme, Comenius Multilateral Network from the Education, Audiovisual and Culture Executive Agency (EACEA).

The project will develop a multi-disciplinary learning approach for professionals in education, health and social services in order to facilitate the additional learning and support requirements of children with special needs during periods of transition.

The network will help policy makers, stakeholders and professionals in the field of education to improve their work with pupils with SEN, to enable collaborative working during critical phases of transition.

For further information see www.enableireland.ie

EACEA

Education, Audiovisual & Culture
Executive Agency

From the Chief Executive's Desk



CEO Fionnuala O'Donovan with Mayor of Cork Terry Shannon preparing for the official opening of the Enable Ireland shop on Oliver Plunkett Street in Cork in July 2011

Welcome to the 2011 edition of our National Newsletter. I hope you enjoy reading all the articles contained in these pages. It is wonderful to see the breadth of work that is taking place throughout the country in both services and Retail & Fundraising.

As you know, funding continues to be an issue for the organisation. Funding cuts over the last three years have been challenging for everyone. Staff have taken pay cuts in line with public sector workers and further cost savings are being undertaken in non-pay spending. I am taking this opportunity to restate my commitment to the services that each of you receive and to reaffirm my determination to do everything possible to protect those services. Enable Ireland senior management meet regularly with our funders and at each meeting, we are focused on your needs and on protecting the services that you receive. The vital supports that Enable Ireland and other

disability organisations provide must be protected in order to support children and adults with disabilities to live their lives to their full potential.

In spite of the obvious focus on funding issues, work in earnest has not ceased and there have been many interesting and valuable developments across the organisation, including the official opening of the new centre for Kildare Children's Services at Jigginstown, Naas and the completion of the Children's Services Centre at Rathcorrick, Cavan. The Assistive Technology training programme, which has always enjoyed a great reputation, has gone international and the first overseas training programme has taken place in Qatar. Enable Ireland participated in a transport survey, to seek evidence of the experiences of people with disabilities in relation to access to public transport. Facilitated group meetings were arranged in both Dublin and Limerick and the evidence and

feedback from these groups formed part of the submission by Disability Federation of Ireland to the Department of Transport Sectoral Plan review.

An effort has been made to make this issue of the newsletter more relevant to service users and parents, which I think you'll see as you read it. Padhraic Dormer is just one example of the many driven and proactive service users within Enable Ireland. His success in lobbying Dun Laoghaire Rathdown County Council to dip the footpaths around the centre in Sandyford shows that dedication and persistence pays off. Well done Padhraic! (Page 8)

'In My Own Words' by Teresa Patterson (page 7), who is both a member of staff and a parent of a child who attends Enable Ireland services, gives a wonderful personal experience of the service that we provide. The emotions that Teresa went through during diagnosis and referral and especially on the day that Jamie started pre-school will be all too familiar to many parents reading this.

You can also read the latest from our retail and fundraising division, with updates on the new Enable Ireland shop in Cork, the upcoming No Limits Kite Appeal, our ongoing partnership with TK Maxx and the National Raffle. We are as always sincerely grateful to our donors. Their continued support and innovation in the area of fundraising is vital to our ability to generate much needed income. I look forward to communicating with you again shortly,

Warmest Regards,

Fionnuala O'Donovan
CEO

First ever World Report on Disability

More than 1 billion people around the world live with disabilities, according to a new report offering the first look in 40 years at the global prevalence of disabilities.

The findings come from a report produced by the World Health Organisation and the World Bank. It shows that about 15 percent of the world's population have disabilities and that number is on the rise due to aging and growth in chronic health conditions.

Disabilities are more common in poor countries and among women, older individuals and people living in low-income households, the report found.

Few countries have the infrastructure in place to meet the challenges faced by those with disabilities, the report found. In a series of recommendations to governments and other organisations, those behind the research suggest enhancing inclusion to the greatest extent

throughout society, among other measures.

"Disability is part of the human condition," says Dr. Margaret Chan, director-general of the World Health Organization. "We must do more to break the barriers which segregate people with disabilities, in many cases forcing them to the margins of society."

Read the full report at www.who.int

New Playgrounds!

Meath Footballer Stephen Bray with Caoimhe Duffy performed the official opening of the new playground in Navan in July 2011.



Two Children's Services have recently opened new playgrounds – Meath and Kilkenny.

Speaking at the opening of the Meath Services playground in Navan, Director of Services, Enable Ireland North East, Mary Fox said "This new therapy space will provide much needed additional space to work with children to promote their development through play. The area includes a swing, a sensory garden, sand area and tiled soft surface with hopscotch."

In Kilkenny, children and families who attend the service were present and enjoyed a fun filled if somewhat showery day!

Both of these playgrounds were made possible by the support and fundraising efforts of parents of children who use the service, friends, supporters of Enable Ireland and local businesses.

Kilkenny Services playground official opening



Donations of clothes, shoes, books, accessories and bric-a-brac can now be made at the Children's Service Centre in Bray


 Assistive Technology
 Check out the youtube channel
www.youtube.com/enableirelandat
 for all the latest
 Assistive Technology news



The Club Chaos Team get set for Christmas

Club Chaos

Club Chaos is part of Kerry Family Support Services afterschool programme. It is offered to all children that attend the centre of school going age. The ethos of the club is to have fun, learn new skills, make friends, develop self esteem and confidence, and uncover hidden talents. A secondary aim is to give parents an opportunity to have time for themselves. The range of activities includes cooking, arts and crafts, and board games. They also take trips out to the local pet shop Pet Mania to learn about the animals and linking in with local resource centres for other activities like drumming.

It's never too late to sleep straight!

The staff at SeatTech and the Enable Ireland Children's service in Sandymount believe that sleeping in a straight, symmetrical position can help us to do the things we want to do during the day.

Night positioning is any action or equipment used to place our bodies in comfortable, non-damaging positions while in bed. People usually change positions many times a night but for those with a muscle co-ordination or control problem, or loss of sensation, less movement can result in fixed changes to our body shape which can have knock-on effects on mobility and comfort.

Over the last few years, the staff have piloted and offered training in 24 hour postural management to children and parents, most recently in February 2011.

The feedback from parents was positive, but the practical

response of developing personal postural care plans has been outstanding.

The team now plan to seek funding to train some parents and staff as accredited trainers so that this service can be offered to families and service users more often.

Linda Brien attended the training and has been implementing a 24 hour postural management programme for her son Conor. She says "Conor used to sleep on his side and being in that position all night wasn't good for his long term posture. With the sleep system, Conor has grown accustomed to sleeping on his back, though he still says he doesn't like it! Information about how to prevent problems developing as children grow is vital and this training was very valuable

This article is an extract. For further information and to view the complete article please go to www.enableireland.ie/seatttech



Mary Harris, Physiotherapy Assistant, was recently presented with a long service badge marking her ten years of dedication and commitment to the RDAI.

Riding for the Disabled

The Riding for the Disabled Association of Ireland (RDAI) is a national voluntary organisation which provides the opportunity of recreational and therapeutic riding and carriage driving to people with disabilities.

Children from Enable Ireland Wicklow Services have been attending the RDAI since 1979. Brennanstown Riding School kindly donate the use of their facilities for one hour a week. Children from Early Services and Support Services attend and experience many physical benefits from riding which help to achieve their physiotherapy goals.

The E.I. Brennanstown branch of the RDAI consists of committed helpers and leaders, a group instructor, a Physiotherapist, Physiotherapy Assistant, the riders and their parents.



Caroline Fahy plays Boccia for the Enable Ireland Limerick team.

Boccia

Boccia is a sport widely played throughout Enable Ireland Adult Services. Teams from Enable Ireland centers in Sandyford and Limerick made it to the final four teams of the 2011 National League but unfortunately just lost out on a title.

Enable Ireland's CE partnership with FÁS

Community Employment (CE) is an employment and training programme which helps long-term unemployed people to re-enter the active workforce by breaking their experience of unemployment through a return to work routine. The CE Projects are sponsored by groups wishing to benefit the local community, namely voluntary organisations and public bodies involved in not-for-profit activities. FÁS gives financial support in the form of allowances and funding to assist with the Community Employment programme, for example participant wages, supervisor grants, materials grants, and specific skills training grants. Enable Ireland is one such sponsor organisation and there are currently 155 participants in Enable Ireland working across 13 counties and on services, retail and fundraising projects.

The participants employed by Enable Ireland through Community Employment are involved in a variety of roles with mutual benefits to the employee, gaining valuable work opportunity and training, and to services gaining enhanced support in the delivery of services to people with disabilities





Parents attending the Early Bird group: Top Row L - R: Majella Treanor, Heather Fagan, Sonia McMeel, Fiona Lynch
Bottom row L - R: Colm McCormick, Lorraine Murtagh, Meiread Galligan

The Early Bird...

The Early Bird Program was run from May to June 2011 for families in Cavan and Monaghan Children's Services. Early Bird is a group run for parents of children with Autism Spectrum Disorder. It looks at what is Autism, and how it effects a child's communication and behaviour. The group also give parents the chance to meet and provide support to each other. Feedback from the group was very positive.

New facilities at Enable Ireland Sandymount School

June 2011 saw the addition of new facilities for Enable Ireland Sandymount School. A Soft Play room was funded by Dormant Accounts funding and the Aviva Stadium with families and friends of Enable Ireland, while a Music Therapy room was funded by donations from parents and staff.

This soft active play equipment is designed for guided or undirected educational activities to aid both the physical and intellectual development of children through play from an early age.

Music therapy has been an integral part of the Enable Ireland Sandymount School curriculum for the past six years.

By using an integrated and person

centred approach the music therapist engages the child in a range of musical experiences: improvisation, singing, receptive listening, composition and song writing, movement to music and relaxation. These sessions can be in an individual or group basis.



Joshua Lakin on guitar and Rory Conway on drums try out the new Music Therapy room in Sandymount

Radio Waves!



Service users from Enable Ireland Adult Services, Ennis, Co. Clare have been taking part in a Radio Broadcasting Volunteer Programme in association with a local community radio station, Radio Corca Baiscinn, based in Kilkee, Co. Clare. As a result of their participation in this programme, where they record music and chat programmes, Enable Ireland Adult Services Clare has received a CRAOL (Community Radio Forum of Ireland) Achievement Award in recognition of their promotion of diversity and access.



Jason Noone, Music Therapist, pictured with Service User Darren Noonan, working on the QCFM project.

Music Therapy Presentation

Jason Noone, music therapist with Enable Ireland Adult Services in Clare and Limerick, presented a paper at the World Congress of Music Therapy in Seoul, South Korea in July 2011. Jason's presentation was about music therapy service development and how the PCP model has influenced his work at Enable Ireland. He also spoke about the value of technology in providing access to meaningful musical experiences for people with disabilities. The congress was attended by over 600 people and Jason received many questions about his music therapy programme, his applications of technology and there was particular interest in QCFM, the community radio project run by service users in Limerick.

Surf's Up!

In June 2011, Adult Service Users from Enable Ireland Limerick took to the waves and began adapted surfing. The group travel to Lahinch in County Clare and instruction is given by the Lahinch Surf School.

Service User Trevor Kennedy has been surfing for two years. "When I go surfing I forget about all the other stuff going on in my life." Glen Hayes tried surfing for the first time this year. He said "surfing is about the journey to the beach, the craic in the water and enjoying the company of the other surfers".

The equipment used for adapted surfing is specialised and trainers have specific experience in working with people with disabilities.

John McCarthy from Lahinch surf school said "it's been a pleasure to have the Limerick Enable Ireland crew come and surf with us over the month of June. It not only brings great joy to the clients but also to our instructors who love bouncing off the guys and seeing their love of surfing. The surf boards with handles are the greatest thing ever! It makes the experience of surfing a lot more manageable."

“ When I go surfing I forget about all the other stuff going on in my life.”



Joyce Synott and Trevor Kennedy surfing in Lahinch, Co. Clare

Surf2Heal

Four years ago, the organisation Surf2heal began to develop the concept of using surfing as a therapy for children with autism. On a small beach in Garretstown, Co Cork, volunteers spent a week introducing children to surfing. The success of this week spawned other camps around Ireland. There are currently week long surf camps, and evenings surf sessions run by parents and friends on a voluntary basis around Ireland.

For further information on Adapted Surfing, please visit:

Aloha surf school :
<http://www.surfschool.tv/>

Lahinch surf school:
www.lahinchsurfschool.com

Surf2heal Cork & Kerry:
www.surf2heal.org
or email No limits Surf Club, Fanore, Co Clare, dmc19@yahoo.ie

GET CONNECTED: National Advocacy Service

A new National Advocacy Service has been set up to provide independent, representative advocacy services for people with disabilities. It is organised and managed on a regional basis by five Citizens Information Services and is supported by the Citizens Information Board.

Regional managers are as follows:

Region	Area	Name	Contact
1	Dublin broadly within the M50 excluding parts of Blanchardstown & parts of North Dublin (Clondalkin)	Ben North	086 0218778
2	North East: Westmeath, Cavan, Fingal, Louth, Longford, Meath, Monaghan	Louise Loughlin	086 4102083
3	South East: Offaly, Carlow, Kildare, Kilkenny, Laois, Wexford, Wicklow	Selina Doyle	086 0409978
4	South West: Waterford, Cork, Kerry, Limerick, Tipperary	Patricia O'Dwyer	086 0223984
5	West/North West: Leitrim, Donegal, Sligo, Mayo, Galway, Clare, Roscommon	Josephine Keaveney	086 0201095

For further information please see http://www.citizensinformationboard.ie/services/advocacy_services/

In my own words...

Teresa Patterson – My Enable Ireland

My name is Teresa Patterson. I have a son Jamie who is eight years old. Jamie has a diagnosis of Cerebral Palsy Spastic Quadriplegia and Epilepsy. When Jamie was born he was a very sick little boy. He was in and out of hospital a lot. When Jamie was 5 months old he was referred to Enable Ireland Sandymount, where we met Dr Monaghan who was the medical director at the time. He introduced us to a team of people who would help Jamie to reach his goals. We met a physiotherapist, an occupational therapist and a speech and language therapist. There were also members of the team available to us for information and any question we had. Everybody we met was very positive and friendly. They took us through ways to help Jamie step by step.

Jamie started in Early Services where he received his therapy, we were given a home programme to work on which we did every day and every night. In fact we still do although obviously it has changed as Jamie's needs changed. We got a lot of support from Enable Ireland which was brilliant. The Early Services team would arrange swimming groups for all the parents and children. Afterwards there was tea. This gave us a chance to get together with all the other children and parents. We got to talk, get to know each other and share our stories, it was great to get the opportunity to do this. We were all feeling the same, anxious, worried and even scared. Enable Ireland helped us to support each other and I have made some life long friends and most importantly so had Jamie.

Jamie then went on to preschool in Enable Ireland. I was really anxious at this point as it is hard for any mother to leave her child, but I think it is extra hard when they have extra special needs. They were brilliant in Preschool and Jamie loved it. Once he settled and was beginning to make 'little pals', that made me more relaxed. The staff in Enable Ireland's Nursing department make a point of getting to know the children really well. Each day Jamie became more confident and sociable. He was beginning to reach some of his goals and milestones.

Jamie is now in Sandymount school, where I work as a special needs assistant. I am very lucky to be working here as it is a wonderful school with brilliant and talented students. I am really pleased to say Jamie loves school and has loads of friends in school. This was a big year for Jamie as he made his first holy communion. What a special day!

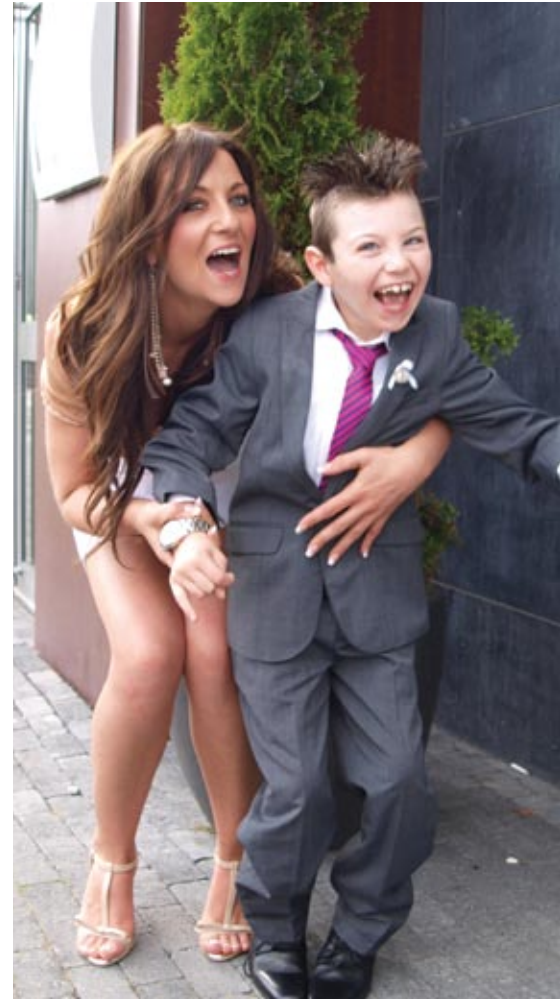
Jamie plays on the school hurling team, he loves it and "takes no prisoners". He also plays power soccer. He loves sport like most boys his age. Enable Ireland and Sandymount School have opened all of this up to Jamie. To see him smile and cheer when they are playing makes it all worth while.

Enable Ireland is a huge part of our lives, it has been for the last 8 years and will continue to be in the future.

Jamie is a very bright little boy with lots of character, his personality shines

through him. I am very proud to call myself his mum.

A big thank you to all the staff in Enable Ireland Sandymount and the wonderful nursing department.



Jamie made his First Holy Communion this year



Danny Aherne

My name is Danny Aherne. I attend Enable Ireland Adult Services in Limerick.

I did a P.L.C. art course in Desmond College, Newcastlewest, Co. Limerick. I did the course part time over a period of two years.

I would like to thank Enable Ireland for providing funding for a P.A., Dawn Hennessy, to assist me with the course. However there are three main people I would like to thank in Enable Ireland, my P.C.P. co-ordinator Claire Keyes, my keyworker Carol Hanley and Tony Murphy, Director of Services.

I learned a lot from the course. I gained a lot more confidence. I improved my skills and most importantly, I thoroughly enjoyed myself. I passed the course with distinctions and am very proud of myself.

Danny

Congratulations to Danny from all at Enable Ireland

Surveying Adult wheelchair users' experience of service provision at SeatTech, Enable Ireland Sandymount, with University of Limerick - Thanks to all those who participated and returned questionnaires, your opinion is very important. Congratulations to the winner of the draw for a €50 One4all Voucher, Gerard O'Dowd from Dublin. Research results will be available from September 2011.

Padhraic Dormer on an Access Mission

Enable Ireland Sandyford service user Padhraic Dormer set his mind to lobbying his local council to make the footpaths around the Enable Ireland centre more accessible – and won.

Padhraic is chairperson of the advocacy group SPEAK in Enable Ireland Sandyford. Service users had, as part of this group, expressed their frustration in accessing the local shop and general access to the centre as none of the footpaths were 'dished'. Dishing footpaths involves lowering sections of the footpath, usually outside buildings or at junctions to make it easier for a wheelchair to move on and off the path.

Padhraic began by finding out who the Access and Equality Officer for Dun Laoghaire Rathdown (DLR) County Council was. He wrote to the officer, Pat Coffey, explaining that the problem

resulted in service users who are wheelchair users having to go into the cycle lane to make the journey and, as there are often cars parked in the cycle lane, onto the road.

After further correspondence and a meeting with an Engineer from the council's Transportation Department, DLR County Council agreed to 'dish' the footpaths in the area.

The whole process, from first contact to agreeing to fix the problem, took just under two months.

Padhraic says "It was a great sense of accomplishment to see it being done. I'm happy to represent the service users here and if there was another need identified among the group here that I could do something about, I'd be happy to pursue it"

The Kerry Connection



In June 2011, service users from Enable Ireland Kerry Seamus O'Sullivan and Bernard James, along with help from volunteer Joe Casey, boarded an early morning train. Final destination – Dail Eireann.

Seamus says, "We had been planning this trip for the previous six weeks and were so looking forward to it. Our mission was to visit Lenister House, and see what goes on there, and maybe spot a few TD's".

A travel clinic had been organised in the Kerry service to help service users in organising their own outings and Bernard and Seamus used this group to plan their trip.

Seamus continued, "We needed to make contact with a local TD to book

our visit. You can't just walk into Lenister House. Jimmy Denihans office helped us out. We also planned our journey and on the day travelled by car, train, Luas and taxi."

"When we arrived, in true Kerryman style, we had tae and a fry up, no caesar salads here; we are not that cosmopolitan, yet!"

Seamus and Bernard had a wonderful day being shown around the Dáil and even spotted a few TD's like Mary Lou McDonald, Brendan Howlin and Micheál Martin.

"We would really like to thank everyone who helped & supported us on our trip and we are looking forward to planning our next one, the Whitehouse here we come. Is feidir linn!"

EU Project-UEmploy: Consultancy for Employment Inclusion



Despite progress made by the EU over the past decade towards inclusive employment, employment rates for disabled citizens in most European countries remain very low. People with disabilities frequently still find themselves excluded from work and therefore unable to support their independent living and make a meaningful contribution to the community

UEmploy is a two year project funded by the Lifelong Learning Programme- Leonardo da Vinci fund. The project aims to address the lack of common standardised schemes in the context of European employment.

Enable Ireland is part of an expert consortium that includes

organisations from Romania, Bulgaria, Hungary and Finland. The consortium intends to develop, test and introduce a consultancy model to promote effective employment of people with disabilities.

The path toward achieving this aim includes a number of activities, such as national and European studies, development of consultancy tools, training of consultants and testing the designed schemes of consultancy process. This work will take place over a two year period.

For more information on UEmploy please contact: Kate Kearney kkearney@enableireland.ie or telephone 0214290434

Dalai Lama visit to Ireland

Crumlin service user Jenny McCann meeting the Dalai Lama at an Irish Wheelchair Association event in April.



Safari Club Fundraiser

Enable Ireland Mayo Service User Mateusz Dudzinski pictured with his sister Paulina, Mum Sylvia and Trisha Mulkeen & Carol Dempsey, Enable Ireland Mayo. Mateusz parents ran a fundraiser that generated €500 for Mayo Services .



Enable Ireland Fashion Show

Enable Ireland Dun Laoghaire's Fashion show was held at the Royal Marine Hotel in May. Special thanks go out to Sallynoggin College of Further Education (Fashion Department), Tesco Bloomfield's staff, Enable Ireland Bray retail shop, Pennys and Dunnes stores in Dun Laoghaire and the Royal Marine Hotel for supporting our Spring Fashion Show.



Super model Anais McMullin enjoys her moment going down the catwalk at Enable Ireland Dun Laoghaire's Spring Fashion Show

SeatTech Cheque Presentation

Engineers Ireland co-ordinated a street collection for Enable Ireland in February and raised over €1,000.



Job Shadow day

Service user Lucy Riordan got to work in the Department of Foreign Affairs and Trade for Job Shadow Day – here she is pictured with Teresa Mallon, Director, STEP and City Gate; Sean Gallagher, Patron of the Irish Association of Supported Employment and presidential candidate and Rebecca Kelly, Department of Foreign Affairs and Trade.



Limerick Lady

Jessica Keegan with her escort Liam Mulcahy at the 2011 Limerick Lady Contest.





The No Limits Kite Appeal is a campaign designed to lift the spirits! Taking the kite as a symbol of independence and fun, Enable Ireland are asking for public support for the campaign which takes place from 19 – 24 September. It's easy to get involved. All you have to do is:

- Log onto www.nolimits.ie
- Submit a contact form to say you're interested in helping out
- We will contact you with details of your local co-ordinator
- Why not run your own 'No Limits' themed event? Living life with No Limits means something different for everyone so let your imagination take over!

All funds generated will help us fund the best facilities in which to provide therapies, educational and social supports for children, adults and families around the country. All funds raised locally stay locally. Together, we can support people with disabilities to live life with No Limits!



Parent Lorraine Cotter presenting cheque to Martina Shanley, Enable Ireland.

Picture Library for Monaghan

Lorraine Cotter recently made a very generous donation of €685 euro to Enable Ireland Monaghan. The money will be used to create a Picture Exchange Communication System (PECS) library for families. The library will include CDs, DVDs and communication books that families can borrow and use at home with their children. Many thanks to Lorraine for helping us make this library possible.

Mervue Folk Choir raise €2,000

Mervue Folk Choir presented Alicia Boyce and Joanne Murphy with a cheque for €2,000 for Enable Ireland



Services in Galway. Enable Ireland was one of four local recipients of funds from the sale of the choir's fabulous Amazing Love CD which was launched in December of last year. The CD was a first for the Choir and featured 15 of their most popular songs. The cheque presentation took place on the day of their last church performance before the summer break.



Enable Ireland Cork Shop Opening

Minister of State with responsibility for Disability, Deputy Kathleen Lynch, officially opened the new Enable Ireland charity shop at 33 Oliver Plunkett Street in Cork.

Speaking at an event to mark the opening of the shop, Minister Kathleen Lynch said "Enable Ireland's charity shop is a great example of social action for social good. The generous donors of items which are used for sale added to the voluntary effort of many Cork people who

assist in the shop allows Enable Ireland to invest the proceeds for services for people with disabilities in the local area. In these challenging times, I encourage the people of Cork to help in every way to make this new shop a visible landmark for their generosity and commitment to people with disabilities in Cork."

The shop will need about 18 volunteers on a regular basis to operate and members of the public can find out more about volunteering on www.enableireland.ie



Golf Classic in Cork

A Father's Day Golf Classic which took place at Mahon Golf Club raised €3,6330.60 for Enable Ireland Cork Services. Harry Hegarty, who's grandson Sean attends the Children's Services at The Lavanagh Centre, organised the entire event. Harry had plenty of help from family and friends who were delighted to support the inaugural event. On the day over twenty teams took part and enjoyed their game of golf which was then followed by a presentation hosted and sponsored by The Beer Garden Bar in Turners Cross.



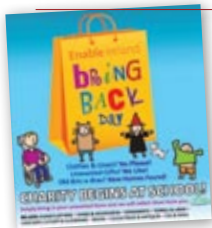
L-R Maureen Walsh, Jean Kelly and Stephanie Helly

Experience volunteering in an Enable Ireland shop

My name is Jean Kelly I am 21 years of age and I am a service user with Enable Ireland Dublin Adult Services in Crumlin Dublin 12.

On the 6th of May 2011 I started working as a volunteer at the Enable Ireland retail shop in Camden street Dublin. I go to the shop every Friday for two hours. To get to and from the shop I travel alone in my powered wheelchair. The work that I do at the shop is tagging clothes, labelling and I also put labels and dates on books and magazines. The staff at the shop are very friendly and a pleasure to work with and I love the chats we have while working in the back of the shop.

I have always dreamed of working in a shop that sells clothes because I love matching clothes together and putting the right colours that go well with each other. I am hoping that this is the start for me to be working in a shop and hopefully someday I can get a job working in a clothes shop.



Charity Begins at School

Enable Ireland have started a campaign of clothes collections in schools. For further information please contact retailadmin@enableireland.ie for details.

Milano Fashion Shows a Huge Success

Featuring the finest high-end fashion from popular and prestigious local and national designers and boutiques, Milano Restaurants in Galway, Kerry and Clare played host to Fashion Shows in aid of Enable Ireland Disability Services. Fabulous shows and full houses were the order of the day at all events with €16,000 in total raised for Enable Ireland from the three separate events.

Go Tommy Go!

Tommy Sheehy from Tralee with his sponsor David Henneby. Tommy will be cycling from Paris to Geneva for Enable Ireland this September. Keep track of Tommy's movement on Enable Ireland website, Facebook and Twitter.



Take it to the Maxx!



A big THANK YOU! to our good friends at TK Maxx - they continue to work tirelessly to raise funds for the Together We Can fund, supporting children's services. Details of future ventures will be publicised through the website.

National Raffle

Thanks so much to everyone who sold or bought tickets for our national raffle draw this year. The lucky prize winners were:

- 1st Prize - €5,000 M. Fitzsimons, Co. Cavan
- 2nd Prize - €2,000 K. Newman, Limerick
- 3rd Prize - €1,000 S. Barry, Co. Limerick
- 5 Runner-Up Prizes - €100 each
- E. Corlett, Co. Meath
- P. Devlin, Dublin 9
- S. Lee, Co. Tipperary
- A. O'Sullivan, Co. Kerry
- A. Pollard, Co. Tipperary
- €500 Super Sellers Prize: N. Moran, Galway

September

Family Fun Day, Marquee event at Morrissey's Farm.

Sunday 4 September. Rostellan Co. Cork. For more details contact: Kevin Morrissey at: 086 3897360.

No Limits Kite Appeal

19 – 24 September 2011 Live life with No Limits and support the Enable Ireland No Limits Kite Appeal. Support by running your own event, supporting a local event or buying a kite pin. For further details please log onto www.nolimits.ie

No Limits at TK Maxx

TK Maxx will be supporting the Enable Ireland No Limits Kite Appeal in September. Drop into your local TK Maxx for details or visit www.nolimits.ie

Paris to Geneva Cycle

17 - 20 September 2011, Paris Live life with No Limits and sign up for a cycle adventure that covers 540km over four days and support Enable Ireland Cork and Kerry Children's Services. A must for any amateur cyclist. Call Sean Scally on 066 7128220.

No Limits Quiz Night

Date to be confirmed, in The Rock Bar, Cork. Contact Ann Harte on 021 4294434 or email corkfr@enableireland.ie.

No Limits Barbeque

Date to be confirmed, sponsored by Harvey Norman – Eastgate Adult Service Centre, Cork. For further details contact: Ann Harte on 021 42944 34 or email: corkfr@enableireland.ie.

Berlin Marathon

24 Sep 2011, Berlin, Germany. Join the Enable Ireland Marathon team this September and participate in one of Europe's finest marathon events. For more information on this event or any of our International Marathon tour packages please call our marathon co-ordinator Joanne Murphy on 091 526 321 or email galwayfr@enableireland.ie

Evening Echo 30th Ladies Cork Mini Marathon.

Sunday 25 September. To register for your sponsorship pack contact Edel Meade on 021 4294434 or email corkfund@enableireland.ie

October

Chicago Marathon, Chicago, USA

8 Oct 2011. For more information on this event or any of our International Marathon tour packages please call our marathon coordinator Joanne Murphy on 091 526 321 or email galwayfr@enableireland.ie

November

Enable Ireland's 15th Annual Ladies Lunch,

Wednesday 9 November in The Maryborough Hotel Cork. Tickets €65.00. Contact Ann Harte/Edel Meade at 021 42944 34 or email corkfund@enableireland.ie.

Certified Assistive Technology Course QATAR

20 – 24 November and 11 – 14 December. For further information on this training, please mail Siobhan Long at slong@enableireland.ie or telephone (01) 63 63 600.

Regional Fundraising Offices and Contact Details:

CORK
Tel: 021 4294803
Email: corkfr@enableireland.ie

DUBLIN AND WICKLOW
Tel: 01 8857151
Email: eastfr@enableireland.ie

GALWAY
Tel: 091 526321
Email: galwayfr@enableireland.ie

KILDARE:
Tel: 045 875676
Email: kildarefr@enableireland.ie

LIMERICK
Tel: 061 301830
Email: midwestfr@enableireland.ie

KERRY
Tel: 066 7128220
Email: kerryfr@enableireland.ie

Editorial Matters

The Enable Ireland National Newsletter is published by:

Enable Ireland Disability Services
32F Rosemount Park Drive
Rosemount Business Park
Ballycoolin Road, Dublin 11

Editor: Enable Ireland Communications
Tel: 01-8857160
Email: communications@enableireland.ie
Web: www.enableireland.ie
Charity No: 4908

Please send your news, views, reviews, comments and photos to the editor at the above email address.

We are delighted to bring you the 2011/2012 edition of the National Newsletter. As you are aware the newsletter aims to provide a forum for exchange of information and acts as a communication tool for staff, service users, their families and other associated bodies. We hope that readers find this newsletter a useful source of information on what's happening in Enable Ireland and beyond.

Thanks to all who contributed so enthusiastically to this issue and we look forward to another bumper issue in 2012.

The views expressed in this publication are not necessarily those of Enable Ireland. The editorial team welcomes contributors but reserves the right to edit submitted material. No responsibility can be accepted for the loss of material submitted. Material from the Enable Ireland newsletter, unless copyright is indicated, may only be reproduced with written permission from the publishers.