

Enable Ireland

National Newsletter Summer 09

INSIDE THIS ISSUE

Turning the Sod:
Work begins at the site of the new Cavan Centre
page 3

“The staff here are able to see past the disability and see the child. They emphasise the similarities rather than the differences between service users and able-bodied children so there is less focus on disability and more on ability”

Spotlight:

A look at Little Pals Playschool in Sandymount through the eyes of a parent
page 4



In My Own Words:

Lindsay Harrison on her experience of being a Speech and Language Therapy Practice Tutor
page 7

Action Week 2009:

Dates set for Action Week 2009! Find out how you can get involved
page 9

Get together:

Bray Refail Staff and Dun Laoghaire Services get acquainted!
page 10

Strategic Plan 2009-2011

Promoting Inclusion - Enabling Independence



I am delighted to announce the publication of Enable Ireland Strategic Plan 2009-2011. This plan is the result of many months of hard work and preparation. It is based on information gained through consultation with service users, their parents, staff at all levels and from all disciplines, the HSE and a variety of external consultees. The aim of this consultation was to ensure that all voices and opinions have a say in how we will deliver services and how we will prioritise resources over the next three years. I would like to take this opportunity to thank all those people who shared their opinions and their expertise and who helped us to write this plan and thereby shape the future for Enable Ireland.

The title of the plan, Promoting Inclusion - Enabling Independence, reflects what we are aiming to achieve as an organisation and, along with our mission statement, has guided us in selecting five strategic priorities. These priorities have the ultimate goal of improving the lives of those who are part of our services. These five strategic priorities are:

- 1 Enhance quality of living for service users through a person centred approach
- 2 Support service users in achieving inclusion and independence within their communities
- 3 Provide timely, accurate and

accessible information to service users and other stakeholders

4 Work in closer partnership with all stakeholders

5 Support service delivery through continuous improvement

The economic environment in which we deliver this plan is vastly different from three years ago when we produced Enable Ireland Strategic Plan 2006 – 2008. Already we have seen a 3% in our government funding for 2009 and we fully acknowledge the difficulties and anxieties that this creates for service users, their families and Enable Ireland staff. In these challenging times it is vital to keep our focus on the goals and direction we have set for the organisation, so that we are both efficient and fair in utilising the reduced resources over the next three years. It is imperative that in the lifetime of this plan every decision we take and every resource we allocate has a positive outcome for service users.

The current economic environment poses significant challenges; our commitment is to continue to listen to you, to work together and to deliver excellent services as we implement the Enable Ireland Strategic Plan 2009-2011.

Fionnuala O'Donovan
Chief Executive

Winning name

Congratulations to Cork physiotherapist Gillian O'Dwyer whose winning entry was the inspiration behind the strategic plan name Promoting Inclusion – Enabling Independence. This title was deemed to best represent the mission of Enable Ireland and encompass what we hope to achieve over the life of this plan.

Promoting Inclusion – Enabling Independence

Enable Ireland Strategic Plan 2009-2011

“ Enable Ireland’s mission is to work in partnership with those who use our services to achieve maximum independence, choice and inclusion in their communities.”

Strategic priorities

Enable Ireland has five strategic priorities that we will work to achieve during the life of this plan. These priorities reflect the expectations and the rights of service users and are relevant across all the parts of our organisation.

As an organisation we will seek to:

- 1 Enhance quality of living for service users through a person centred approach
- 2 Support service users in achieving inclusion and independence within their communities
- 3 Provide timely, accurate and accessible information to service users and other stakeholders
- 4 Work in closer partnership with all stakeholders
- 5 Support service delivery through continuous improvement

How to get a copy of the plan

You can download a copy of **Promoting Inclusion – Enabling Independence** from www.enableireland.ie or you can request a copy from your key worker and/or local service centre. You can also request a copy by contacting the Communications Office on 01 8857160 or by e-mailing communications@enableireland.ie.

Reflecting your voices and priorities

The development of **Promoting Inclusion – Enabling Independence** involved a comprehensive consultation process with staff, service users and families. 4,275 questionnaires were distributed and 12 focus groups conducted with staff, adults and children who access our services, and a cross section of their parents and carers. The themes that were identified as priorities during this consultation focused on more essential services; provision of better, more timely information; support for children and adults in inclusion in their local communities; and working in closer partnership with stakeholders and funders.

Core values:

The Social Model of Disability

A Rights-Based Approach

Person Centredness

Independence

Equality

Integrity

Equity

Quality

Transparency

Accountability

Enable Ireland



Cavan Services turn the sod on new building



Orlagh Murray, parent representative, Gary Falconer, Architect, and Fionnuala O'Donovan, CEO, Enable Ireland, pictured at the recent sod turning ceremony for the new dedicated Children's Services Building in Cavan.

In February 2009, Minister Brendan Smith, T.D. turned the sod to mark the first steps towards the building of a new Children's Services Centre at Rathcorrick, Cavan. This venture is a partnership between Enable Ireland and the HSE, and is supported by Pobal.

This state of the art building will provide a range of services and supports to over 360 children with disabilities and their families in the Cavan area. The Enable Ireland Early Services Team will provide services for children from 0-6 years, and the HSE Child Development Team will provide services for children 6-18 years, providing a one stop shop approach for all children and their families.

Mary Fox, Director of Services in the North East says "This is a great day for all the families who come to this service in Cavan, and for all the hard working staff based here. In a little over a year, they will have a new facility to come to with fantastic facilities such as dedicated therapy rooms, multi sensory room and IT facilities. "

The estimated total cost of the building, including fit-out, is €2.5m. €1.25m was obtained through Dormant Accounts and a further €1.25m will be funded by Enable Ireland from a variety of fundraising initiatives. The site was purchased with funding secured from the HSE. The building is due for completion in spring 2010.



Minister for Foreign Affairs Micheál Martin with Enable Ireland Cork Adult Service User Richard Fitzgerald.

New Cork Adult Service Centre Officially Opened

In December 2008, a new training and day centre for adults with physical disabilities was officially opened by Minister for Foreign Affairs, Micheál Martin TD.

The new building comprises three adjacent units, two of which have been developed into a Training Centre. Designed by architect Thierry Paret of PM Group and built by Cork firm, Lanes the new building offers a modern, fully accessible and versatile space. The new centre is the hub from which diverse programmes for over 60 adult service users in Cork city and county are offered.

Donal Cashman, Chairman of Enable Ireland said "This new centre in Eastgate is the culmination of a lot of hard work by all our staff in the Cork area. It provides a wonderful facility for our service users that the previous site in Ballintemple just couldn't provide. When we work with children, we focus on therapeutic intervention but when it comes to adults, the focus is on skills for life and supporting independence. The new facilities will support the 61 people currently using our services in achieving greater inclusion in their community."

This project has cost in excess of €3.8 million. €1.3million of this was secured by Minister Martin when he was Minister for Health to start the project. The remaining funds have been achieved with financial support from the HSE and the continuing generosity and hard work of donors and volunteers in the Cork area. This wonderful building was ultimately made possible by the continued generosity of the people of Cork.

New Look Newsletter

You may notice some changes in this edition of the National Newsletter. We aim to reflect some of the thousands of personal stories and experiences of staff and service users and to provide a variety of informative articles for readers.

Some of our new features include

- **In my own words**, a first hand account from a member of staff, service user or parent
- **Spotlight**, a feature highlighting a specific service or centre within Enable Ireland
- **Get connected**, a suggested website that may be useful to staff and service users
- A new look **Events Calendar**, so that you can see what's coming up for Enable Ireland at a glance

The editorial team would love to get your feedback on our new look Newsletter. If you have any comments, please contact the Communications Office by emailing communications@enableireland.ie or calling 01-8857160.





Linda O'Reilly and daughter Eve pictured in the Little Pals playschool in Sandymount

Little Pals taking first steps to inclusion

The Little Pals playschool is a unique service, integrating children who attend the Sandymount service with other children in the community. To get an insight into the playschool, we spoke to two parents, Linda O'Reilly and Mairéad Murphy, both of whom have sent all of their children to Little Pals.

Linda's Story:

Linda heard about Little Pals from a friend and instantly knew that it was the kind of preschool she was looking for. Her daughter Grace (five and a half), now in senior infants in a local school, was the first of Linda's children to go to Little Pals. Eve (three), is a current pupil and was on the waiting list from the time she was four weeks old. Linda says "I didn't even put her name down for any other preschools, Little Pals was my one and only choice for her."

Linda believes that integration at an early age avoids any fear or uncertainty developing. She says "Grace came to playschool every day, she didn't notice or care that some of the children in her class had a disability, she didn't even see it because they don't at two or three. She didn't actually notice that there was anything different at all until her fourth birthday party. All the children from her class were there, along with children of family and friends. If was the other children who pointed out to Grace that some of her friends were different. If more children had the experience that Grace had, they wouldn't have seen the disability either."

North East run Integrated Play Group

A one off Integrated Play Group was run in the North East in 2008. The group was run with two children who access services with Enable Ireland along with two other children who do not access services. The goal of the group was to encourage social interaction and play. The group was extremely successful. Due to the success of the Play Group, the team plan to hold a similar group in 2010

Mairéad's Story:

Mairéad's eldest daughter, Grace, has Cerebral Palsy and uses a wheelchair. She was referred to Enable Ireland when she was 18 months old and started in Little Pals when she was two. Grace is now six and attending a local mainstream school. Paddy (five) and Derry (three) followed her into Little Pals and Joe (eight months) is enrolled for 2010.

Mairéad says it gave her peace of mind to send Grace to Little Pals. "It can be difficult for parents of a child with a disability to find a preschool. A lot of preschools may be reluctant to take a child with a disability because of lack of experience. That's not a problem here. The staff have the confidence to deal with children of all abilities and that gives you peace of mind. Therapeutic staff and nurses are always on hand if there's a problem."

Grace particularly benefited from learning through the play of her peers. Mairéad says "Because Grace had mobility problems, she would not have been able to explore and learn through play as much as other children the same age. The fact that she could watch her friends around her playing and learn from them really helped her progress. That wouldn't have happened to the same extent if all the other children in her class had similar challenges."

The decision to send Paddy, Derry and Joe to Little Pals after their big sister was an easy one for Mairéad, as she considers it an excellent preschool for any child. "It also helps siblings to realise that their family is not unique, that many families cope with different challenges. Also it allows them to experience the centre as a place of learning and fun, not just somewhere they go so their sister can get physiotherapy."

About Little Pals

The Little Pals preschool is located within the Enable Ireland Sandymount Service. Started in 2000 with a Department of Justice grant, it aims to have equal numbers of children who use Enable Ireland services, and children from the wider community. The schools pioneering approach to inclusive education has never been advertised, yet word has spread in the community and competition for places grows year on year.

Each class has approximately 12 pupils. 3-4 year olds attend playgroup while 4-5 year olds go to Montessori in the mornings. In the afternoons, playgroup is held for 2 year olds. Generally, children attend all three classes before going on to mainstream school.



L-R Fionnuala O'Donovan, CEO, Enable Ireland, Pdraig Connelly, Lord Mayor of Galway City, Chantal Gibney, former Olympic swimmer, service user Amy Broderick, Donal Cashman, Chairman, Enable Ireland, Mary Courtney, then Director of Services Enable Ireland Galway (now Regional Director of Services, Enable Ireland West and South)

Splish! Splash! Splosh! Galway Hydrotherapy pool opens

The new Hydrotherapy Pool at Enable Ireland Galway was officially opened in December 2008. Performing the opening was former Irish Olympic Swimmer Chantal Gibney, and local Galway girl, Amy Broderick, from Loughrea. Also in attendance at the event were Pdraig Connelly, Lord Mayor of Galway City, Donal Cashman, Chairman, Enable Ireland and Fionnuala O'Donovan, CEO, as well as parents, staff

and friends of Enable Ireland Galway.

The new facility will be of huge benefit to the children attending the service and will be available for use by the wider community through other organisations wishing to provide hydrotherapy to their clients. The new facility cost €1.3 million, of which €800,000 was raised through the efforts of the retail and fundraising team in Galway.

AT Training Courses Spread Wings!

Enable Ireland's National Assistive Technology Training Service is running its certified AT training course outside of Dublin for the first time this year. In partnership with the University of Limerick's Assistive Technology Assessment Centre, it ran the first 5 days of this 9 day course in January 2009. The course was fully subscribed with participants drawn from a wide range of sectors including health, education and employment. The second week of the course will be held in May.

Dublin Adult Services secure communications training funding

Dublin Adult Services have secured €12,000 in funding under the Benefit Inclusion grant scheme, funded by the Department of Communications, Energy and Natural Resources. The programme delivered will train service users in the use of modern communication technologies such as email, internet, online banking and purchasing, and mobile technologies over a 12-week period.

The Sandymount School Outreach team

The Sandymount School Outreach team, which supports children attending mainstream school held a parent evening in January 2008 on the topic of "Sports and leisure activities for children and adults with physical disabilities". Among the speakers were Paralympic Swimmer, David Malone, Oisín Jordan Co-ordinator of the FAI's Football for All programme, Pearse Nolan from the Dublin South Arch Club, Mark Barry from the Irish Wheelchair Association and service user Sean O'Kelly. Further information from Conor Carroll on 01 2615900 or email ccarroll@enableireland.ie



Enabled Adults Get Results

In February 2008, learners from the Enable Ireland LEAP Training Programme gathered to celebrate the achievement of FETAC awards.

Enable Ireland Limerick began the Limerick Educational Advancement Programme (LEAP) in September 2002 in partnership with existing service users. This programme provides HSE funded Rehabilitative Training for adults with physical and sensory disabilities. The aim of LEAP is to provide trainees with an opportunity to develop a broad range of skills in order to maximise independence and inclusion in their communities.

Enda Gallagher, the first recipient of the LEAP Programme to receive the Level 3 FETAC Award in General Learning (Enable Ireland is a FETAC Quality Assured training centre), was presented with his certificate by David Tighe, CEO of Limerick's Live95 FM. Enda stated "It is an honour to have David Tighe present me with the award because he gave me great support while on community placement with Live95 FM. It is a huge achievement for me to receive the FETAC Award in General Learning and Enable Ireland helped me do it." Enda has progressed to the Quantum LEAP project of Enable Ireland where the principles of Life Coaching are used to enable him to achieve further goals. He is also currently attending a Certificate Course in Leadership and Advocacy in LIT.



L-R: Mary Harris and Bernadette Murray from Enable Ireland Wicklow Services on graduation day.

Skill Project Training Programme Graduation 2008

Seven Enable Ireland staff graduated from the Skill Project Training Programme in November 2008: Mary Harris and Bernadette Murray from Wicklow Childrens Services, Colin Tierney and Denis Neville, from Cork Childrens Services, Anne Mangan from Clare Adult Services and Mary Relihan-Fleming from Kerry Childrens Services. All participants received a "Health Service Skill Award" (FETAC level 5).

A further nine Enable Ireland staff are currently participating in the Skill Project Training Project in 2009/2010.

The aim of the SKILL Programme is to provide support staff and supervisors with the opportunity to fulfill their potential through a FETAC accredited training programme in order to enhance their role and the quality of service provided to clients.

For more information on The Skill Project Training Programme, contact Kate Kearney, Hr & Corporate Affairs Dept, Cork on 021-4290434.



Denis Neville and Colin Tierney from Enable Ireland Cork Children's Services attending FETAC Skills Training

Quinn's Cross FM

In March 2009, QCFM Radio was officially launched at Enable Ireland Adult Services, Quinn's Cross, Mungret, Limerick, followed by a fashion show and broadcast in the centre for family and friends

The project was funded by the Dream River Run fundraiser, involving 100 Jet Ski's and small boats leisure trip from Limerick Harbour to Carrigaholt pier in Co. Clare. This fundraiser brought in €20,000 to buy equipment.

The project involves 10 service users working on the radio show, learning skills such as production, sound mixing, interviewing, broadcasting and DJ skills. This exciting project enables service users to share music and ideas with the community through music they have composed, performed or have a preference for. This ongoing project will be shared with other Enable Ireland centres and will broadcast a weekly news bulletin.

A CD of the broadcast will be sent to all centres in Enable Ireland. If you would like to receive future broadcasts or any information about the radio project, please contact Pat Fitzpatrick at pfitzpatrick@enableireland.ie

Information Fair For People With Disabilities

In February 2009, the Southside Partnership hosted a Disability Information Fair in the Stillorgan Park Hotel in Dublin. The aim of the fair was to provide people with disabilities, their families and carers with a broad range of information that would improve and enhance the quality of their lives. Upwards of 32 organisations set up information stalls at the venue including Enable Ireland who were represented by service users and staff from Enable Ireland Dun Laoghaire Adult Services.

The large crowd who attended the Fair listened attentively to a key address by Paralympian Dave Malone and to the details of the launch of Dun Laoghaire Rathdown County Councils Accessibility Implementation Plan 2009.

Enable Ireland service users availed of the opportunity to talk with representatives from other organisations and to renew contacts with those they had not seen for quite some time.



Rathmore House gets a face lift

Rathmore House respite facility in Wicklow has had a few improvements recently. All light switches are now accessible and a sliding door has been installed between the conservatory and living room for insulation purposes. Also, there will now be a TV in every room. Contact Leesa Sixsmith on lsixsmith@enableireland.ie for further information.

S.P.E.A.K

The Dublin Adult service users group, People in Action, has been renamed SPEAK. SPEAK stands for Support Participation Equality Action Knowledge. Contact Keith Hayes for further information
khayes@enableireland.ie

In my own words...

My role as Speech & Language Therapy Practice Tutor



Lindsay Harrison, Speech and Language Practice Tutor, Enable Ireland Wicklow and Sandymount.

Having worked as a Speech & Language Therapist in Enable Ireland Wicklow Services for four years, the opportunity to become a practice tutor within the organisation arose. As I felt ready to both expand my own knowledge and skills and share what I have learned thus far through working at Enable Ireland, I felt the role would be ideal.

My role as Practice Tutor involves working across both Enable Ireland Bray and Sandymount centres. My duties, alongside being a Speech & Language Therapist, include coordinating placements for Trinity College Speech

& Language Therapy Students at all levels of their third level education. I directly supervise and assess and support other therapists within the organisation to do so. I also attend meetings at Trinity College with other Speech & Language Therapists involved in student education throughout the Leinster region, in order to aid the ongoing development of the clinical programme at the college.

Thus far, the role has been extremely interesting and rewarding. Taking on students has many benefits to the student, the therapist, the organisation, the area of physical disability as a whole and most importantly the service user.

The placements often motivate students to consider working in the area of physical disability once they qualify, thereby enriching the profession and adding to clinical expertise.

The benefits to the service user are also vast. Taking a student can increase the capacity to provide intensive intervention, thereby allowing for more frequent therapy. Much time is spent with the student discussing and problem solving about how to meet the therapy needs of the service user. As students often come with fresh knowledge, ideas and access to up to date research this is highly valuable.

As a practice tutor I am continuously

“ Taking on students has many benefits to the student, the therapist, the organisation, the area of physical disability as a whole and most importantly the service user. ”

At Enable Ireland, students not only develop their skills and knowledge as a Speech & Language Therapist, but also have the opportunity to work as part of an interdisciplinary team under the Social Model of Disability. This allows for a particularly positive learning experience as it enables students to learn about the roles of other health professions and to view service users holistically, not just seeing communication in isolation.

realising the advantages of taking students, both as part of my own professional development and as a whole. I am enjoying the challenge of developing my training and supervision skills alongside my therapy skills and I am excited to be able to actively advocate for people with disabilities and promote the philosophies of Enable Ireland to our future professionals.

Crumlin Adult Service users launch ‘Hot Wheels’

In December 2008 the service users of Enable Ireland in Crumlin were very proud to launch the first edition of their very own newsletter, Hot Wheels.

Hot Wheels is the result of a 10 weeks Publishing an Article training course that service users undertook in September 2008. The course has given the service users the skills and the knowledge to write and edit their own newsletter.

Hot Wheels is about the service users' day to day life in the centre and out in the local community. In the newsletter you can find out the latest events, interviews, tips and interesting articles. The team is hoping to publish four times a year and at the moment is working on the spring edition.

The team wanted to ensure that Hot Wheels will be accessible to everyone, so they produced a paper version as well as an on-line and audio version, available on the Enable Ireland Web-site. (www.enableireland.ie)

The team would like to thank Veronica Cavagnini for all her help and support.



Members of the Editorial team, Laura Dempsey, Jenny McCann and Wayne Keogh pictured at the launch of 'Hot Wheels', the Crumlin Adult Service Users Newsletter



Meath Early Services Santa

Children from Meath Early services meeting Santa



Milanos Fashion Shows

Miss Universe Ireland launches the Milano Fashion Show in Aid of Enable Ireland. Shows took place in Limerick and Galway.



The fully refurbished Enable Ireland South Wicklow Service now includes a dedicated Reception area. Pictured in the multisensory room is Caitlin Boyle.



Cases Wine Fair Galway

Pictured at the Cases Christmas Wine Fair in aid of Enable Ireland are: L-R: Diana Emberg, Peter Boland Cases, Joanne Murphy



Jane Hand, ESM, Pam Fausset and Anna van den Broek, with two supporters from the night

Squealing Pig Fundraiser and Awareness Night

In October 2008 an Enable Ireland fundraising night was held at the Squealing Pig in Monaghan Town. The night raised €3389 for Enable Ireland Monaghan services. Brenda and Conor Clerkin generously organised the event.

Wicklow Services get revamp

It operates Monday, Tuesday and Thursday from Arklow Boys National School, Coolgreaney Road, Arklow, Co. Wicklow Tel: 0402 91028 . Email: jtoher@enableireland.ie.



Cork Cruiscín Lán

Ann McCarthy, Cork Fundraising Co-ordinator, received a cheque for €734.20, the proceeds of a non-uniform day from Ciaran Cooke Principal of North Presentation Secondary School and Adel Coleman, who organised both the school fundraiser at the music gig at Cruiscín Lán in aid of Enable Ireland.



Kildare Fundraiser

Conor Kelly and mum Suzanne making a cheque presentation for a fundraiser run by Conor's dad to Willie Callaghan, Kildare Fundraising Coordinator.

Action Week 2009

The dates are set for Action Week on Disability 2009. Enable Ireland's annual fundraising and awareness week will take place from 14 – 19 September. We'll focus on highlighting access to social and leisure activities for children and adults with disabilities, raising money for our services and having a whole lot of fun doing it!

This years Action Week will be bigger and better than ever before and we need your help to do it.

How can you Take Action?

- Volunteer as a fundraiser
- Volunteer to take a box of Action Badges to sell to your friends or work colleagues
- Organise an awareness raising or fundraising event



Remember to keep an eye on the notice board in your local service for more information about Action Week. Let's Take Action on Disability together!

Regular Giving Helps Build New Centres

During December 2008 and January 2009, our fundraisers called door to door in communities in both counties to ask for help with funding our much-needed new centres in Tralee, Co. Kerry and Naas, Co. Kildare. Both new centres are greatly needed in order to cope with the increasing number of children requiring our services.

Rather than give a once-off donation, we asked people to sign up to giving a manageable amount on a monthly basis by direct debit.

The public responded with great generosity to our appeal. Thanks so much to the five hundred people who now give regular gifts of €21 per month to us. With your help, we are building and equipping new centres so that children with disabilities in each county have access to the best possible services and facilities, such as hydrotherapy pools and physiotherapy gyms.



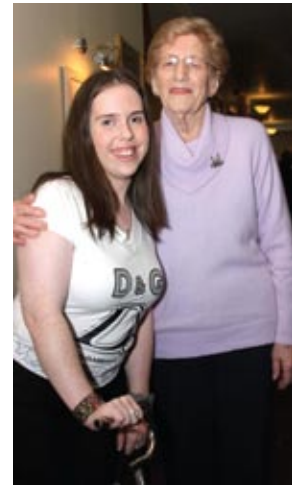
Wedding Dress Event

In February, Enable Ireland shops in Cork and Limerick held Wedding Dress events.

The events are now widely anticipated by brides in the south looking to bag a bargain. Wedding dresses in all styles and sizes and by a wide variety of designers and retailers were on offer for between €100 and €400.

Ladies who Lunch for Enable Ireland

The 12th Enable Ireland Cork Ladies Lunch took place in November 2008, with a capacity gathering of 430 in the Maryborough House Hotel. Once again, Cork's most glamorous gals came out in support of Enable Ireland Cork Services and raised in excess of €34,000 for children and adults with disabilities in Cork.



Service User Aimee O'Riordan, who gave a speech at the event with guest speaker Agnes McCarthy

Anne Hegarty, who organises the lunch every year, was joined by a number of friends and supporters of Enable Ireland including Deputy Lord Mayor of Cork, Councillor Laura McGonigle and Fionnuala O'Donovan, CEO of Enable Ireland. Aimee O'Riordan, a service user and member of the Ability Aware Group at Enable Ireland's new Adult Services Training Centre at East Gate, Little Island spoke at the beginning of lunch. Aimee, 20, has cerebral palsy and spoke about and spoke about the quality services available at East Gate and described the important work carried out by the Ability Aware Group. In Aimee's words 'People with disabilities have the same rights, hopes, dreams and futures just like anyone else and the Enable Ireland staff have encouraged me to become more independent and confident about myself.'

Following the lunch Agnes McCarthy, was revealed to the assembled guests as the mystery speaker and spoke about her life and times to a hushed audience. Agnes now aged 93, was born in 1915 before the foundation of the State. In her lifetime she has seen The War of Independence, the Civil War and two World Wars. She has 7 children, 23 grand-children and 43 great-grand-children.

The 12th Lavanagh Ladies Lunch, which is kindly sponsored by Brown Thomas Cork and MSL (Motor Services Limited Turners Cross), is one of the most important fundraising events for Enable Ireland Cork Services.

Retail staff visit Dun Laoghaire Service

Enable Ireland Adult Services Dun Laoghaire decided that the start of 2009 would be an excellent time to arrange a visit from our nearest Enable Ireland Retail Shop. In our case this was Enable Ireland's retail shop located on the main street in Bray. After a phone call to the very helpful shop manager, Liz Rooney, a visit was organised for Liz and several of the shop volunteers.

The purpose of the visit was twofold. First, it gave the shop staff an opportunity to see the type of local Enable Ireland service for people with disabilities that benefits from the revenue raised through the retail outlets. Secondly it gave the Service Users and staff of the centre an opportunity to find out how the shops operate and work on our behalf.

The group was given a tour of the centre and given information on the types of training, programmes and activities that are delivered. An explanation was given about the other services available including respite, evening social programmes, and assistive technologies, seating department, leisure and cultural outings and links to community and supported employment opportunities.

Liz said that one of the main questions the customers ask over and over again is 'Where does the money raised in the shops go to?'. Hopefully the staff are in a much better position to answer that question after the visit.

They explained about the shop design/presentation, the different types of donations they receive (clothes, shoes,



cd's, bric a brac etc) and how they sort them out.

Finally it was time for a few photographs and instead of saying the usual 'cheese', everyone said 'recession'. But let's hope the current economic downturn doesn't affect the generous donations that the general public give to Enable Ireland's retail shops. These donations, together with hard work the staff and volunteers put in, help support services like ours.

Liz and her team have invited us all to visit their retail shop sooner than later – as long as we all donate at least one thing!

Gary Morris,
Dun Laoghaire Adult Services

Coming to a House Near You!

Watch out for this year's house-to-house collections happening in your area. Each year, hundreds of generous Enable Ireland volunteers spend time dropping collection envelopes to houses in their local area to collect donations for local services.

If you would like to help raise money to fund Enable Ireland services and facilities in your area, please let us know by calling 01 8857158. It doesn't take a lot of time, but your help does make a real difference.

Area	Time of Year
Mayo	1 March – 14 April
Tipperary	1 March – 14 April
Wexford	15 April – 15 May
Dublin East	15 April – 1 June
Wicklow	22 April – 31 May
Nth Co Dublin	22 April – 31 May
Westmeath	22 April – 31 May
Kilkenny	1 May – 15 June
Clare	1 May – 15 June
Kerry	20 May – 20 June
Carlow	20 May – 20 June
Dublin Nth & Sth Central	17 June – 31 July
Galway	24 June – 8 July
Laois	24 June – 31 July
Galway	28 July – 18 August
Sligo/Leitrim	10 July – 14 August
Limerick	1 Oct – 30 November
Dublin South	1 Oct – 30 November
Meath	1 Nov – 30 November
Kildare	15 Nov – 30 November
Cavan	1 Nov – 30 November
Offaly	1 Nov – 30 November

National Spring Clean drive for Enable Ireland

In March 2009, Enable Ireland teamed up with interior designer and presenter of RTE's Desperate Houses, Fiona Wilson, to encourage the public to spring clean their homes and make a donation to Enable Ireland shops. This drive was in response to an average donations drop of 50% over one sample week in February 2009.

Fiona developed tips on spring cleaning that are available to download from www.enableireland.ie. An internal donations drive also took place in mid March, generating over 500 bags of stock for Enable Ireland's shops.



Ruth O'Sullivan (3) and Grace Adams (5) with RTE's Fiona Wilson, launching Enable Ireland's Spring Clean donations drive at the Enable Ireland Little Pals Playschool in Sandymount, Dublin in March 2009

The artist formerly known as ERP



Eastern Regional Postural Management (ERP) has changed its name to SeatTech. The name was changed to provide a more user-friendly name and to reflect the fact that the term posture management encompasses many interventions and management processes beyond the services provided by ERP. The change relates to name only and not to any of the services services provided by the team from their base in Sandymount.



SeatTech and Dublin Services staff celebrating launch from left to right- Richard Selway, Sonia Somers, John Tiernan, Tina Carnegie, Marianela Gulizia, Vania Fields, Sally Anderson and Aine Jackson



John Tiernan, Clinical Engineer formally launching SeatTech's new Product Manual and Quick Start Guide



Fionnuala O'Donovan, CEO, Enable Ireland and Barry McMullen officiating at the launch



Doors open at SeatTech, formerly known as the Eastern Region Postural Management Service

From Me to You – Instructions for use

The Enable Ireland SeatTech service, a service that prescribes and provides custom posture and mobility equipment, recently updated its IFU package. The objective of this project was to create a user manual which would display the necessary information, while highlighting safety warnings, in a readily accessible user-friendly manner. In order to comply with European standards, the provision of medical equipment should be accompanied with appropriate instructions for use (IFU). It is also important that those providing the equipment ensure that these are provided in a manner that is understood by the recipients. These instructions, which often come in the form of a booklet, offer critical information on the correct use of equipment. Misuse of equipment can result in injury to the equipment's user or carer. For further information, please contact Linda at lwynne@enableireland.ie

New Regional Offices

Enable Ireland now has new contact details for two regional offices.

The Regional Office for the South & West is based at Ballinasloe Enterprise & Technology Centre, Creagh, Ballinasloe, Co Galway. Phone: 090 9631572, Fax: 090 9631617, email regionalofficesw@enableireland.ie.

The Regional office for the North & East is based at, Sandymount Avenue, Dublin 4. Phone: 01 2600498, Fax: 01 2695871, email: regionalofficene@enableireland.ie.

Get Connected – recommended websites

Try-it.ie is a web-based library of Electronic Assistive Technology



It means that people with disabilities can:

- borrow and trial new EAT devices
- receive feedback from other users and AT assessors
- make informed decisions about what best suits their circumstances before making a commitment; and
- avail of assessments by more informed and highly trained professionals (as a result of the education, training and support dimension)

The Department of Justice, Equality and Law Reform fund the project, managed by POBAL, under The Enhancing Disability Services Project (EDS). Enable Ireland, along with the NRH, NCBI and Irish Motor Neurone Disease Association and the Assistive Communication Technologies Officers Network, are partners.

Workshops

Clicker 5 educational training workshops, at both introductory and advanced level, will be held in Cork on June 16 and 17. For further information contact Shirley Deakin on 01-4990412 or email sdeakin@enableireland.ie

Grid 2 workshops, which will be held in Galway in late April / May. For further information contact Shirley Deakin on 01-4990412 or email sdeakin@enableireland.ie

Induction Training

National Staff Induction Training dates for 2009 are 11 March (Dublin), 9 June (Cork) and 7 October (Limerick) – venues to be confirmed. Booking forms are available in your local service.

Action Week

Action Week on Disability will take place from 14 – 19 September 2009.

Kildare Golf Classic

The annual Kildare Golf Classic will take place on 15 May. Further details from Willie Callaghan on 045875676 / wcallaghan@enableireland.ie

London Marathon

You can run the London Marathon for Enable Ireland. The event takes place on Sunday 26 April. For further information contact Joanne Murphy on 091 526321 or galwayfr@enableireland.ie

Kerry Choral Society Concert

The Kerry Choral Society concert in aid of Enable Ireland Kerry will take place on Sunday 17 May. For further information contact Sean Scally on 066066-7128220 or email sscally@enableireland.ie

Kerry Ladies Lunch and Fashion Show

The Kerry Ladies Lunch and Fashion Show will take place on 22 May in the The Earl of Desmond Hotel, Tralee. For further information contact Sean Scally on 066066-7128220 or email sscally@enableireland.ie

Flora Women's Mini Marathon

Join the Enable Ireland Mini Marathon Team 2009 and raise funds for Enable Ireland. For more information and to order your sponsorship card contact fundraising@enableireland.ie

Family Fun Day in association with Fáilte Salthill Family Trails

A fun day out for all the family on Sunday 7 June, join us for a short trail along the prom with lots of entertainment along the way and a big party at the end! A great day out for young and old alike. Register your interest by emailing galwayfr@enableireland.ie

Kerry Golf Classic

The Kerry Golf Classic will take place Saturday 4 July. For further information contact Sean Scally on 066066-7128220 or email sscally@enableireland.ie

Kerry Emergency Cycle

A return cycle from Tralee to Killarney, followed by a BBQ will take place on 13 June. Contact Sean Scally for details

West Cork Emergency Services Cycle

Will take place on July 11. Contact Ann McCarthy or Kerry McMahon on (021) 4294434 or email corkfr@enableireland.ie for details.

Cases Charity BBQ

Join us for a fantastic evening of fine wine and fabulous food. A great evening's entertainment guaranteed, with lots of opportunities to win numerous prizes on the night. For further information contact Joanne Murphy on 091 526321 or galwayfr@enableireland.ie

New York Marathon 09

Join the Enable Ireland Team and participate in the world's greatest marathon through the Streets of New York on Sunday November 1. Take in the 5 boroughs of New York from Staten Island to Central Park in a 26.2 mile journey that will exhilarate, and excite you! Limited places available on the Tour so book your place today by emailing galwayfr@enableireland.ie

Further information on all of these events is available on www.enableireland.ie

Regional Fundraising Offices and Contact Details:

CORK
Tel: 021 4294803
Email: corkfr@enableireland.ie

DUBLIN AND WICKLOW
Tel: 01- 8857151
Email: eastfr@enableireland.ie

GALWAY
Tel: 091-526321
Email: galwayfr@enableireland.ie

KILDARE:
Tel: 045-875676
Email: kildarefr@enableireland.ie

LIMERICK
Tel: 061-301830
Email: midwestfr@enableireland.ie

KERRY
Tel: 066-7128220
Email: kerryfr@enableireland.ie

Editorial Matters

The Enable Ireland National Newsletter is published by:

Enable Ireland Disability Services
32F Rosemount Park Drive
Rosemount Business Park
Ballycoolin Road, Dublin 11

Editor: Enable Ireland Communications
Tel: 01-8857160
Email: communications@enableireland.ie
Web: www.enableireland.ie
Charity No: 4908

Please send your news, views, reviews, comments and photos to the editor at the above email address by mid-October 2009.

We are delighted to bring the Summer 2009 edition of our national newsletter. As you are aware the newsletter aims to provide a forum for exchange of information and acts as a communication tool for staff, service users, their families and other associated bodies. We hope that readers find this newsletter a useful source of information on what's happening in Enable Ireland and beyond.

Thanks to all who contributed so enthusiastically to this issue and we look forward to another bumper issue in Winter 2009.

The views expressed in this publication are not necessarily those of Enable Ireland. The editorial team welcomes contributors but reserves the right to edit submitted material. No responsibility can be accepted for the loss of material submitted. Material from the Enable Ireland newsletter, unless copyright is indicated, may only be reproduced with written permission from the publishers.